



## Atlas of gynecologic surgical pathology

<https://iha.andornot.com/permalink/library20848>

Author: Clement, Philip B  
Stall, Jennifer N  
Young, Robert H

Edition: 4th ed.

Place: Edinburgh UK

Publisher: Elsevier

Pub Date: 2020

Physical Description: vii, 659 p. : col. ill.

Format: Book

Subject: [Genital Diseases, Female](#)  
[Gynecologic Surgical Procedures](#)  
[Pathology](#)

Notes: Includes bibliographical references and index.

ISBN: 9780323528009

Call No.: WP 17 C625 2020

Location: RIH Library

Loan Policy: 21 days



## Atlas of gastrointestinal pathology: a pattern based approach to neoplastic biopsies

<https://iha.andornot.com/permalink/library20803>

Author: Lam-Himlin, Dora M  
Montgomery, Elizabeth A  
Arnold, Christina A

Place: Philadelphia PA

Publisher: Wolters Kluwer

Pub Date: 2019

Physical Description: x, 668 p. : col. ill.

Format: Book

Subject: [Gastrointestinal Tract](#)  
[Gastrointestinal Diseases](#)  
[Pathology](#)  
[Biopsy](#)  
[Atlases](#)

Notes: Includes bibliographical references and index.

ISBN: 9781496367549

Call No.: WI 17 L213 2019

Location: RIH Library

Loan Policy: 14 days



## Head and neck pathology

<https://iha.andornot.com/permalink/library20759>

Author: [Thompson, Lester D.R., ed](#)  
[Bishop, Justin A., ed](#)

Edition: 3rd ed.

Place: Philadelphia PA

Publisher: Elsevier

Pub Date: 2019

Physical Description: xiv, 763 p. : col. ill.

Format: Book

Subject: [Head and Neck Neoplasms](#)  
[Head](#)  
[Neck](#)  
[Pathology](#)

Series: Foundations of diagnostic pathology

Notes: Includes bibliographical references and index.

ISBN: 9780323479165

Call No.: WE 707 H432 2019

Location: RIH Library

Loan Policy: 21 days



## Atlas of pathophysiology

<https://iha.andornot.com/permalink/library20827>

Author: [Stewart, Julie G., ed](#)

Edition: 4th ed.

Place: Philadelphia PA

Publisher: Wolters Kluwer

Pub Date: 2018

Physical Description: viii, 479 p. : col. ill.

Format: Book

Subject: [Pathology](#)  
[Physiology](#)  
[Atlas](#)

Abstract: Cells, homeostasis, and disease -- Cancer -- Infection -- Genetics -- Fluids and electrolytes -- Cardiovascular disorders -- Respiratory disorders -- Neurologic disorders -- Gastrointestinal disorders -- Musculoskeletal disorders -- Hematologic disorders -- Immunologic disorders -- Endocrine disorders -- Reproductive disorders -- Renal disorders -- Skin disorders -- Sensory disorders.

Notes: At head of title: Anatomical Chart Company  
Includes bibliographical references and index.

ISBN: 9781496370921

Call No.: QZ 17 A881 2018

Location: KGH Library

Loan Policy: 21 days



## Understanding pathophysiology

<https://iha.andornot.com/permalink/library20622>

Author: [Huether, Sue E](#)  
[McCance, Kathryn L](#)  
[El-Hussein, Mohamed Toufic](#)  
[Power-Kean, Kelly](#)  
[Zettel, Stephanie](#)

Edition: 1st Canadian ed.

Place: Milton ON

Publisher: Elsevier

Pub Date: 2018

Physical Description: xix, 1150 p. col. ill.

Format: Book

Subject: [Physiology](#)  
[Pathology](#)  
[Canada](#)

Notes: Includes bibliographical references and index.

ISBN: 9781771721172

Call No.: QZ 4 U55 2018

Location: RIH Library

Loan Policy: 21 days



## Comprehensive radiographic pathology

<https://iha.andornot.com/permalink/library19847>

Author: [Eisenberg, Ronald L](#)

Edition: 6th ed.

Place: St. Louis MO

Publisher: Elsevier

Pub Date: 2016

Physical Description: xii, 468 p.

Format: Book

Subject: [Radiography](#)  
[Pathology](#)

Notes: Includes index.

ISBN: 9780323353243

Call No.: WN 200 E36 2016

Location: RIH Library

Loan Policy: 21 days



## Breast cancer : fundamentals of evidence-based disease management

<https://iha.andornot.com/permalink/library19369>

Author: [Henderson, I. Craig](#)  
Place: Oxford UK  
Publisher: Oxford University Press  
Pub Date: 2015  
Physical Description: x, 244 p. : ill.  
Format: Book  
Subject: [Breast Neoplasms](#)  
[Breast](#)  
[Combined Modality Therapy](#)  
[Neoplasm Invasiveness](#)  
[Neoplasm Metastasis](#)  
[Pathology](#)

Notes: Includes bibliographical references and index.  
ISBN: 9780199919987  
Call No.: WP 870 H496 2015  
Location: RIH Library  
Loan Policy: 21 days



## Burghardt's colposcopy and cervical pathology: textbook and atlas

<https://iha.andornot.com/permalink/library18414>

Author: [Girardi, Frank](#)  
[Reich, Olaf](#)  
[Tamussino, Karl](#)  
[Pickel, Hellmuth](#)

Place: Stuttgart DE  
Publisher: Thieme  
Pub Date: 2015  
Physical Description: xiii, 225 p. : col. ill.  
Format: Book  
Subject: [Cervix Uteri](#)  
[Pathology](#)  
[Atlases](#)  
[Colposcopy](#)

Notes: Preceded by Colposcopy-cervical pathology.  
Includes bibliographical references and index.  
ISBN: 9783136599044  
Call No.: WP 470 B956 2015  
Location: RIH Library  
Loan Policy: 21 days



## How to get the most from your skin biopsy samples

<https://iha.andornot.com/permalink/library18293>

Author: [Ballantyne, Marcia](#)  
Corporate Author: [Interior Health](#)  
Place: Kamloops BC  
Publisher: Interior Health  
Pub Date: 2015  
Physical Description: 1 DVD (41 min.)  
Format: DVD  
Subject: [Biopsy](#)  
[Skin Diseases](#)  
[Pathology](#)  
Series: RIH grand rounds  
Notes: Presentation by Dr. Marcia Ballantyne at RIH Physicians' Grand Rounds on April 21, 2015.  
Call No.: WR 105 B188 2015  
Location: RIH Library  
Loan Policy: 21 days



## Robbins and Cotran pathologic basis of disease

<https://iha.andornot.com/permalink/library19090>

Author: [Kumar, Vinay, ed](#)  
[Abbas, Abul K., ed](#)  
[Aster, Jon C., ed](#)  
[Perkins, James A., ill](#)  
Edition: 9th ed.  
Place: Philadelphia PA  
Publisher: Elsevier Saunders  
Pub Date: 2015  
Physical Description: xii, 1391 p. : col. ill. ; hard cover  
Format: Book  
Subject: [Pathologic Processes](#)  
[Pathology](#)  
[UBC SMP](#)  
Notes: Includes bibliographical references and index.  
ISBN: 978455726134  
Call No.: QZ 4 R657 2015  
Location: RIH Library  
KGH Library Reserve  
Loan Policy: 21 days

## Gross pathology handbook: a guide to descriptive terms

<https://iha.andornot.com/permalink/library19453>

Author: [Horn, Christopher](#)  
[Naugler, Christopher](#)

Place: [Edmonton AB]

Publisher: Brush Education

Pub Date: 2014

Physical Description: viii, 182 p : col.ill. ; coil bound

Format: Book

Subject: [Pathology](#)

Abstract: A guide for gross pathology using description rather than diagnostic terminology. -- Back cover.

Notes: Includes index.

ISBN: 9781550595680

Call No.: QZ 140 H813 2014

Location: KGH Library

Loan Policy: 21 days



## Robbins basic pathology

<https://iha.andornot.com/permalink/library18248>

Author: [Kumar, Vinay, ed](#)  
[Abbas, Abul K., ed](#)  
[Aster, Jon C., ed](#)

Edition: 9th ed.

Place: Philadelphia PA

Publisher: Elsevier Saunders

Pub Date: 2013

Physical Description: xii, 910 p. : ill.

Format: Book

Subject: [Pathology](#)

Notes: Includes bibliographical references and index.

ISBN: 9780437717815

Call No.: QZ 4 R657b 2013

Location: KGH Library

Loan Policy: 21 days



## Underwood's pathology: a clinical approach

<https://iha.andornot.com/permalink/library17396>

Author: [Cross, Simon S., ed](#)  
Edition: 6th ed.  
Place: Edinburgh Scotland  
Publisher: Churchill Livingstone Elsevier  
Pub Date: 2013  
Physical Description: xviii, 769 p. : ill.  
Format: Book  
Subject: [Pathology](#)  
[UBC SMP](#)  
Notes: .KBH copy is ordered/catalogued through UBC, QZ 4 U56 2013  
ISBN: 9780702046728  
Call No.: QZ 4 U56 2013  
Location: KGH Library  
RIH Library  
VJH Library  
KBH Library  
Loan Policy: 21 days



## Zoobiquity: what animals can teach us about health and the science of healing

<https://iha.andornot.com/permalink/library18778>

Author: [Natterson-Horowitz, Barbara](#)  
[Bowers, Kathryn](#)  
Edition: 1st ed.  
Place: New York NY  
Publisher: Alfred A. Knopf  
Pub Date: 2012  
Physical Description: viii, 308 p.  
Format: Book  
Subject: [Pathology](#)  
[Disease Models, Animal](#)  
[Pathology, Veterinary](#)  
[Physiology, Comparative](#)  
[Psychology, Comparative](#)  
Notes: Includes bibliographical references and index.  
ISBN: 9780307593481  
Call No.: QZ 33 N38 2012  
Location: KBH Library  
Loan Policy: 21 days





## Personalized medicine & pathology

<https://iha.andornot.com/permalink/library16268>

Author: [Maung, Raymond](#)  
Corporate Author: [Interior Health](#)  
Place: Kamloops BC  
Publisher: Interior Health  
Pub Date: 2011  
Physical Description: 1 DVD (51 min.)  
Format: DVD  
Subject: [Pathology](#)  
[Medical Genetics](#)  
Series: RIH grand rounds  
Notes: Presentation by Dr. Raymond Maung at RIH Physicians' Grand Rounds on May 17, 2011.  
Call No.: QZ 50 M451 2011 A/V  
Location: RIH Library  
Loan Policy: 21 days



## Professional guide to pathophysiology

<https://iha.andornot.com/permalink/library7168>

Edition: 3rd ed.  
Place: Philadelphia PA  
Publisher: Wolters Kluwer Health/Lippincott Williams & Wilkins  
Pub Date: 2011  
Physical Description: vii, 659 p. : col. ill.  
Format: Book  
Subject: [Pathology](#)  
[Physiological Phenomena](#)  
Notes: Includes bibliographical references and index.  
ISBN: 9781605477664  
Call No.: QZ 140 P964 2011  
Location: RIH Library  
Loan Policy: 21 days



## Pathology : PreTest self-assessment and review

<https://iha.andornot.com/permalink/library16572>

Author: [Brown, Earl J](#)  
Edition: 13th ed.  
Place: New York NY  
Publisher: McGraw-Hill Medical  
Pub Date: 2010  
Physical Description: xi, 612 p. : ill.  
Format: Book  
Subject: [Pathology](#)  
[Examination Questions](#)  
[UBC SMP](#)  
Series: PreTest  
Notes: Includes bibliographical references and index.  
KBH copy is ordered/catalogued through UBC.  
ISBN: 9780071623490  
Call No.: QZ 18.2 B877 2010  
Location: RIH Library  
KBH Library  
Loan Policy: 21 days



## Porth pathophysiology: concepts of altered health states

<https://iha.andornot.com/permalink/library18884>

Author: Hannon, Ruth, A., ed  
Pooler, Charlotte, ed  
Porth, Carol Mattson, ed  
Matfin, Glenn, ed

Edition: 1st Canadian ed.

Place: Philadelphia PA

Publisher: Wolters Kluwer Health/Lippincott Williams & Wilkins

Pub Date: 2010

Physical Description: xxx, 1601 p. : col. ill. ; + 1 CD-ROM

Format: Book  
CD-ROM

Subject: Disease  
Pathology  
Physiology  
Nurses' Instruction

Notes: Includes bibliographical references and index.

ISBN: 9781605477817

Call No.: QZ 4 P851 2010

Location: RIH Library

Loan Policy: 21 days



## Robbins and Cotran atlas of pathology

<https://iha.andornot.com/permalink/library16408>

Author: Klatt, Edward C.

Edition: 2nd ed.

Place: Philadelphia PA

Publisher: Saunders Elsevier

Pub Date: 2010

Physical Description: xii, 577 p. ; ill. (some col.)

Format: Book

Subject: Pathology  
Atlas

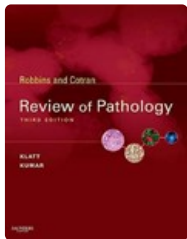
Notes: Includes bibliographical references and index.

ISBN: 9781437701708

Call No.: QZ 17 K63 2010

Location: KGH Library

Loan Policy: 21 days



## Robbins and Cotran review of pathology

<https://iha.andornot.com/permalink/library16409>

Author: [Klatt, Edward C.](#)  
[Kumar, Vinay](#)

Edition: 3rd ed.

Place: Philadelphia

Publisher: Saunders Elsevier

Pub Date: 2010

Physical Description: xii, 451 p. : ill. (some col.)

Format: Book

Subject: [Pathology](#)  
[Examination Questions](#)

Abstract: This easy-to-use new edition helps you effectively master the most important principles and facts in pathology. More than 1,100 questions-many new to this edition-reinforce the fundamentals of gross and microscopic pathology as well as the latest findings in molecular biology and genetics.

ISBN: 9781416049302

Call No.: QZ 18.2 K63 2010

Location: KGH Library

Loan Policy: 21 days